



GLOBAL REFERENCE GUIDE

Angela Ferrantino
Reservations Manager
email:af@portpalace.mc
T:+377 97 97 9005

Emna Metoui
VP, Marketing & PR
email:em@portpalace.mc
T:+377 97 97 9033

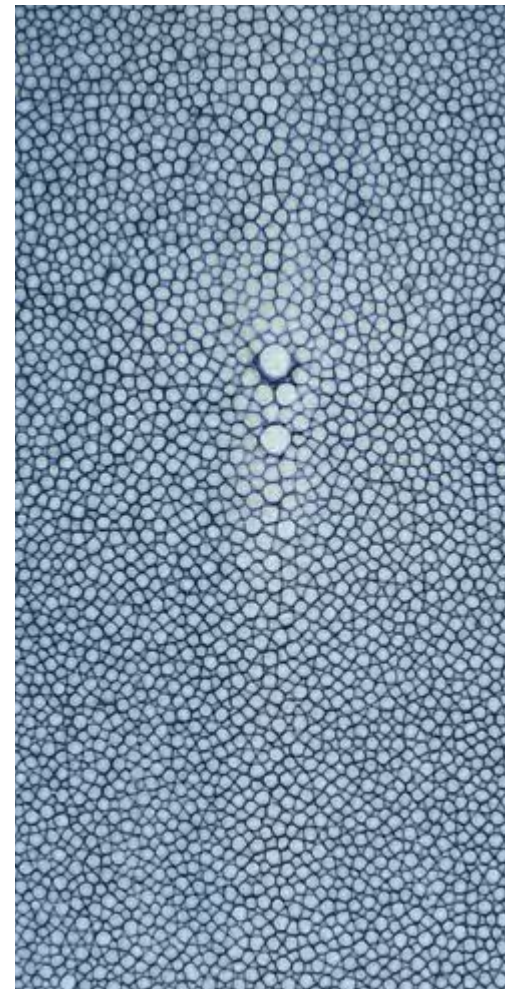
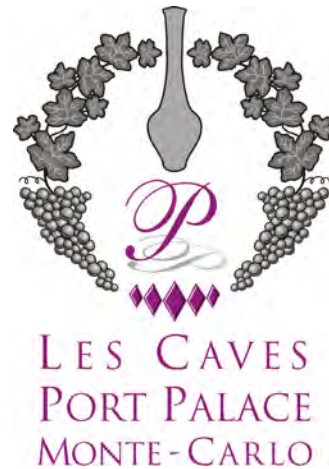
Port Palace Boutique Hotel | Quai des Etats-Unis
7 avenue du Président J F Kennedy
98 000 Monte Carlo, Monaco
T: +377 97 97 90 00 F: +377 97 97 90 08
www.portpalace.mc



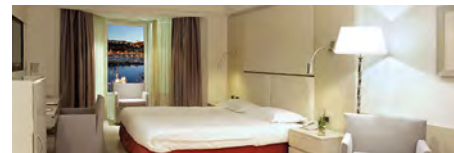
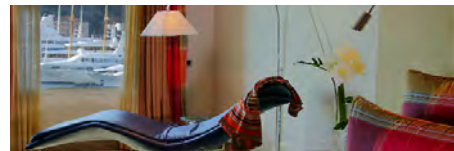
to the Port Palace, the very first & only boutique hotel in Monaco and thank you for your interest.

No matter which service we will provide you (rooms, restaurant, beauty, fitness, entertainment or floral composition) we will do our very best to exceed even your expectations.

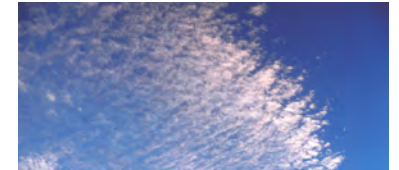
This global reference guide covers technical data for logistics purposes. It is destined essentially at technical staff in the context of holding special events at the Port Palace. We do remain at your disposal for any additional information or clarification.



ELEMENTS



AIR



SUN



ROCK



SHELLS



SEA



HOW GREEN?



At the Port Palace, we are not “eco chic” and did not start talking green with the wave.

Because our Hotel is brand new (entered into operation in September 2003), We are simply the best equipped and most eco friendly Palace.

Take for instance the materials used, All wooden panels used are recycled. We did not cut one single tree to built our hotel. All our pipes are coated hanks to a unique German technology so that hot water remains hot and this reduces energy consumption because the hot water is readily available to guests who no longer need to run the cold water before getting the desired water temperature. (25 to 30 % savings in both energy and water.)

Our Air Conditioning cooling system is not aire based but sea water based. This means that not only we need no polluting cooling towers on the roof but also huge energy savings by pumping sea water for purposes of cooling the machinery. Also being located within the cliff our wine cellars are naturally cool and the air conditioning system is only used for regulatory purposes.

Ecological and energy saving bulbs are used all over the Hotel (except for the technical lighting)

Our waste is sorted in the Kitchen, restaurant, offices, housekeeping.

All our amenities are recyclable (biodegradable plastic and boxes). And we installed soap and cosmetic dispensers all over the Hotel, resulting in huge savings in terms of soaps, packaging paper, and carbon (all coming from China) .

All our toilet flushoin system features two options for water savings purposes.

Our Michelin Star Chef, Patrick Raingard focuses on buying local and seasonal products. Also, we were the first (two years ago) to refrain from serving endangered Mediterranean tuna.

Eco-billing is used and our banqueting presentations, night reports are no longer printed on paper but posted in the network. All our promotional materials (such as this Service Guides) is only produced in a PDF format and posted on our site.

Our Staff is regularly trained to be eco conscious. They all sort waste and to turn off lights and AC in their offices when they leave.

Last but not least, our design,courtesy of Leila Menchari (Hermes Paris) features a wide array of eco freindly ideas and materials. Leila purposely chose local wood and stones in all common areas instead of carpets,



SERVICES & AMENITIES

SERVICE HIGHLIGHTS

Boutique hotel with a total of 50 suites all overlooking the legendary Monte Carlo Marina
 Rooms and Suites Connecting, additional beds available (except for Superior Rooms Category)
 Non smoking Hotel

3 suites fully equipped for physically challenged guests
 Public toilets equipped for physically challenged guests

Express check-in & check-out

24 H Valet parking, limousine service

Mobile phone, car, motor yachts & jet rental service, Opera, Theatre Ticketing

In house flower service

Meeting spaces available

Computers on request, Secretarial services on request

Complimentary Broadband and wireless Internet access all over the property

Complimentary Newspapers on request and subject to availability in Monaco

Complimentary ice service on request

Complimentary access to private beach in Monte Carlo associated with beach package in summer time

Over 70 TV Channels accessible via optical Fiber -HD quality viewed on 42 inch plasma screens in all rooms & suites

Soap, gel and shampoo dispensers all over the property in toilets and bathrooms for health and ecological reasons

Twice daily house keeping service

Down pillows & non allergic pillows available

Duvets available in all rooms and suites

Individual air conditioning systems, Air conditioned corridors

Separate elevators and staircases for guests and for service

In suite sprinkler, smoke detectors and alarm systems

In suite private bar, Individual safe

Jacuzzi and separate shower, Private steam bath in certain suites

Bathrobes in suite, 100% Cotton premium quality towels

Three direct phone lines per suite

Twice daily house keeping service

Laundry & dry cleaning, In house ironing service

Complimentary access to Iron and ironing board on simple request

In suite Hair dryer

RESTAURANTS & BARS

Panoramic Restaurant overlooking the Monte Carlo Marina

24 hour room service

Panoramic Bar, Lobby bar and Library

Winter garden for tea service, and drinks

Catering service, Two private dining spaces

Private use of the Terrace for Private functions on demand

Private space for cigar connoisseurs, Two wine cellars equipped for wine tasting

BEAUTY

Fitness centre totally equipped (including steam bath and sauna)

Daniele de Winter products in our Institute for treatments and massages.

Personal Training programs on demand, Yoga Studio

ROOM BREAKDOWN

SUPERIOR (1ST FL. ONLY)



Number of suites: 9--(4 connecting)
 Area: 37 m2
 Separate Shower: Yes
 Full marble bathroom: Yes
 Jaccuzzi: Yes (exceptin romms for disabled guests)
 42 inch TV Screen: Yes
 View on the Marina: Yes
 Complimentary Internet Access: Yes
 Separate Bedroom: No
 Private Hammam: No

DELUXE JUNIOR SUITE 2-3-4-AND 5TH FL.



Number of suites: 32- (32 connecting)
 Area: 51 m2
 Separate Shower: Yes
 Full marble bathroom: Yes
 Jaccuzzi: Yes
 42 inch TV Screen: Yes
 View on the Marina: Yes
 Complimentary Internet Access: Yes
 Separate Bedroom: No
 Private Hammam: No

GRAND CORNER 1-2-3-4-AND 5TH FL.



Number of suites available: 5 -(4 connecting)
 Area: 62 m2
 Separate Shower: Yes
 Full marble bathroom: Yes
 Jaccuzzi: Yes
 42 inch TV Screen: Yes
 View on the Marina: Yes
 Complimentary Internet Access: Yes
 Separate Bedroom: Yes
 Private Hammam: No

EXECUTIVE CORNER 2-3-4-AND 5TH FL.



Number of suites available: 4
 Connecting to DJS via Private corridor
 Area: 89 m2
 Separate Shower: Yes
 Full marble bathroom: Yes
 Jaccuzzi: Yes
 42 inch TV Screen: Yes
 View on the Marina: Yes
 Complimentary Internet Access: Yes
 Separate Bedroom: Yes
 Private Hammam: Yes

PORT PALACE MONTE-CARLO **1st Floor**

CONSIGNES

INCENDIE
Gardez votre calme

Appelez ou faites appeler les sapeurs-pompiers.
18 ou 93 30 19 45

Attaquez le feu au moyen des extincteurs sans prendre de risques.

EVACUATION

À l'audition du signal sonore ou sur ordre suivez les indications de direction.

Pris dans la fumée: baissez vous, l'air frais est près du sol.

Ne revenez pas en arrière sans y avoir été invité.

N'utilisez pas les ascenseurs.

Téléphones utiles

Les Sapeurs-Pompiers
18 ou 93 30 19 45

Ambulance
18

Le C.H.P.G.
97.96.99.00

extincteur à poudre ABC	R.I.A.	vanne gaz	coupe circuit	transformateur	colonne humidité
extincteur à eau et AFFF	bacnet d'alarme	vanne poterie	bâche électrique	colonne sèche	stockage eau incendie
extincteur CO2	commande descente/usage	chauffière	générateur	tableau d'évacuation	couleur lavage eau

extincteur à poudre ABC	R.I.A.	vanne gaz	coupe circuit	transformateur	colonne humidité
extincteur à eau et AFFF	bacnet d'alarme	vanne poterie	bâche électrique	colonne sèche	stockage eau incendie
extincteur CO2	commande descente/usage	chauffière	générateur	tableau d'évacuation	couleur lavage eau

PROTECH 7-12/04/2014

PORT PALACE MONTE-CARLO **2d to 5th Floor**

CONSIGNES

INCENDIE
Gardez votre calme

Appelez ou faites appeler les sapeurs-pompiers.
18 ou 93 30 19 45

Attaquez le feu au moyen des extincteurs sans prendre de risques.

EVACUATION

À l'audition du signal sonore ou sur ordre suivez les indications de direction.

Pris dans la fumée: baissez vous, l'air frais est près du sol.

Ne revenez pas en arrière sans y avoir été invité.

N'utilisez pas les ascenseurs.

Téléphones utiles

Les Sapeurs-Pompiers
18 ou 93 30 19 45

Ambulance
18

Le C.H.P.G.
97.96.99.00

extincteur à poudre ABC	R.I.A.	vanne gaz	coupe circuit	transformateur	colonne humidité
extincteur à eau et AFFF	bacnet d'alarme	vanne poterie	bâche électrique	colonne sèche	stockage eau incendie
extincteur CO2	commande descente/usage	chauffière	générateur	tableau d'évacuation	couleur lavage eau

extincteur à poudre ABC	R.I.A.	vanne gaz	coupe circuit	transformateur	colonne humidité
extincteur à eau et AFFF	bacnet d'alarme	vanne poterie	bâche électrique	colonne sèche	stockage eau incendie
extincteur CO2	commande descente/usage	chauffière	générateur	tableau d'évacuation	couleur lavage eau

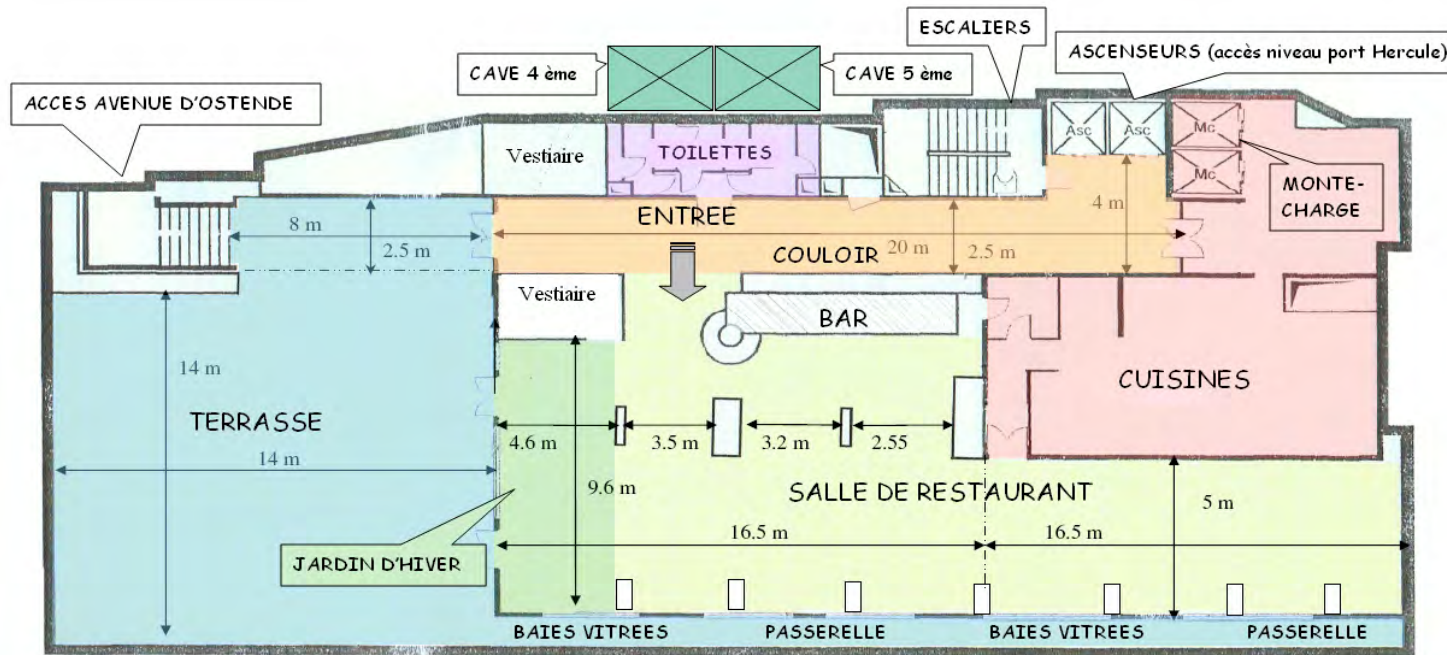
PROTECH 7-12/04/2014

DINING ROOM & TERRACE LAY-OUTS

Surface terrasse: 216.20m²

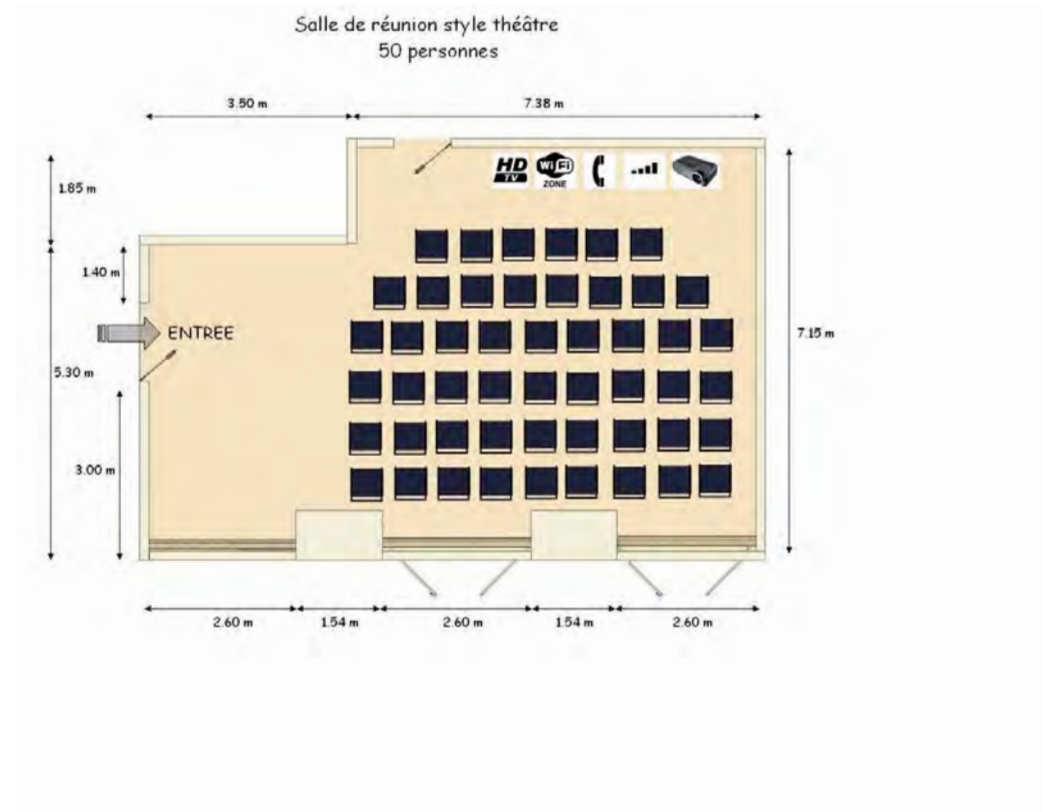
Surface Lounge: 94.82m²

Surface Dining Room: 139.13 m²



PORT HERCULE

CONFERENCE ROOM LAY-OUT



Overall Surface: 78.29 m²

Capacity:

- 25 persons in U shape format
- 16 persons in board format
- 50 persons in theater format
- 20 persons in classroom format
- 30 persons in banqueting format
- 50 persons in reception format